

CP/M Disk Explorer V1.0

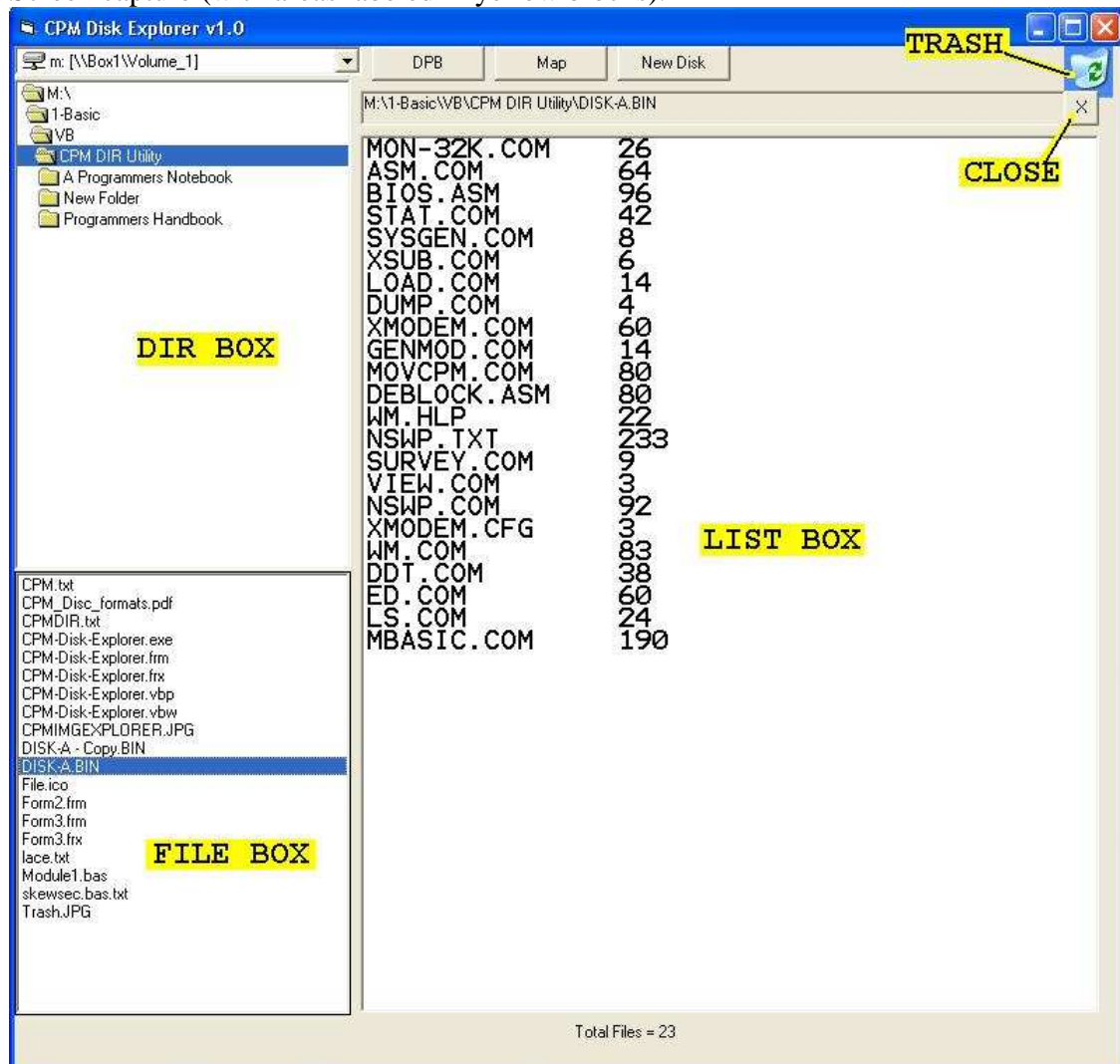
(Rename the .XEX file to .EXE)

Here is a utility that will allow you to copy files into and out of a virtual CP/M disk file. The CP/M disk file is a large file that will act as an entire floppy disk for a CP/M system. The Z80Pack uses such files as does my ALTAIR / IMSAI 8080 CPU replacement board.

This utility is programmed in VB6, source code is available and free for general use. Please contact me at jbensadon@hotmail.com if you require any further information.

The program uses VB6's controls for navigating drives, folders and files. It looks like the old windows, and I encourage anyone with better programs and skills than mine to modernize this program.

Screen capture (with areas labeled in yellow blocks).



How to use the program

Use **DRIVE BOX** and **DIR BOX** to select a working folder containing the desired files. Click **DPB** to set the desired Drive Parameter Block for the disk you wish to open. You may now either open an existing “*Disk File*” or create a **New Disk**. If creating a new disk, it will only appear in the **FILE BOX** available to be opened. Double click a file in the **FILE BOX** or Drag and Drop any “*Disk File*” to the **LIST BOX** to open it. The List Box will populate with all the CP/M files stored within virtual disk container. Similar to a ZIP file concept, only the files are not compressed, but instead stored in the CP/M disk format.

Copy Files To “*Disk Image*”

Drag and Drop any file from the FILE BOX to the LIST BOX

Copy Files From “*Disk Image*”

Drag and Drop any file from the LIST BOX to the FILE BOX

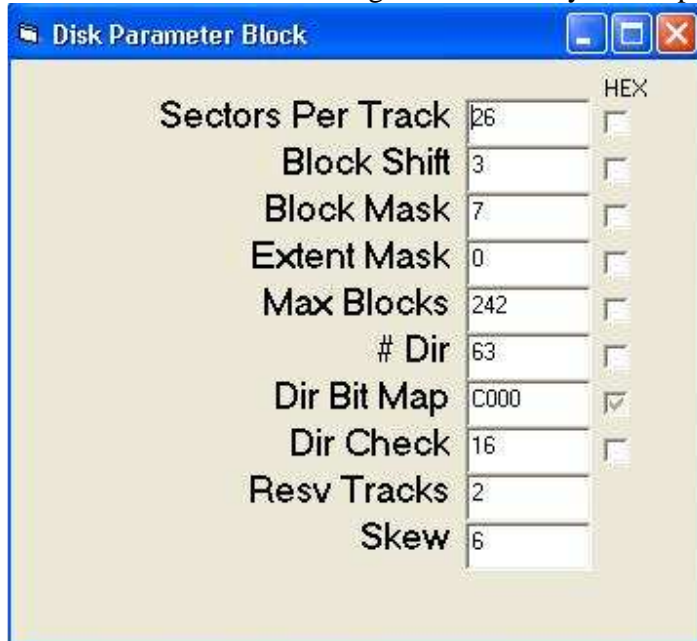
Delete Files

Either real files from the FILE BOX or files within the “*Disk File*” can be deleted by dragging them to the **TRASH** icon.

Use the **CLOSE** to finish viewing and modifying the “*Disk File*”.

MAP shows the allocation table of the disk and some statistics (when a disk file is open).

DPB allows you to change the Drive Parameters Block in CP/M (with Skew factor). This function only works when you do not have a disk file opened. Click HEX to change that field to HEX mode for editing. The Directory Bit Map is forced to always be HEX.



Parameter	Value	HEX
Sectors Per Track	26	<input type="checkbox"/>
Block Shift	3	<input type="checkbox"/>
Block Mask	7	<input type="checkbox"/>
Extent Mask	0	<input type="checkbox"/>
Max Blocks	242	<input type="checkbox"/>
# Dir	63	<input type="checkbox"/>
Dir Bit Map	C000	<input checked="" type="checkbox"/>
Dir Check	16	<input type="checkbox"/>
Resv Tracks	2	
Skew	6	

Program by Josh Bensadon. June 12, 2016.